

BOS and Magic Contest

BridgeTabs require that you first start BOS

Another prerequisite is that PC and tablets are connected to the same network.

0. Installation

1. Download and install BOS package from the BridgeTabs web page/Downloads.
2. Make sure that PC and BridgeTabs are connected to the **SAME** wireless network.

1. Start BOS

Double-click the BOS symbol on the desktop.



2. The deals

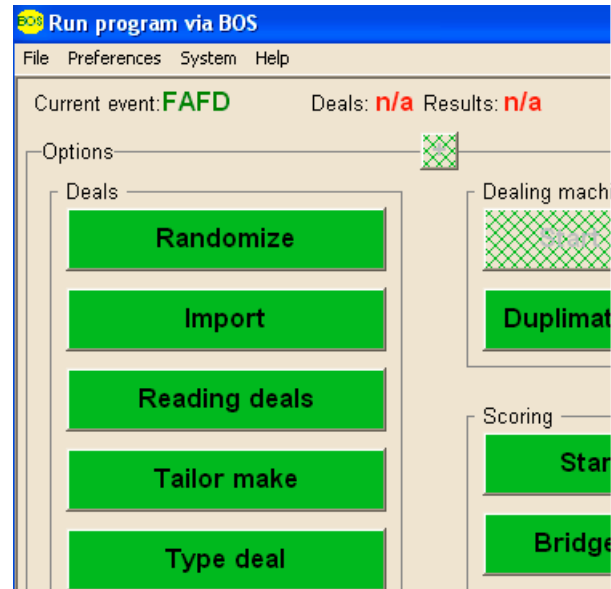
You should first of all choose to import the deals if they do not already exist in BOS.

.dlm file

CLOSE BOS and double-click on the source file if your deal source is a dlm file.

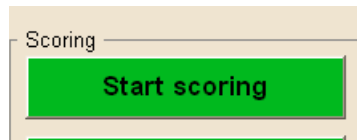
Deal file in other file

Choose IMPORT if the source file is in another format than .dlm. You need to CONVERT DEAL FILE first if the file is in an uncommon format.

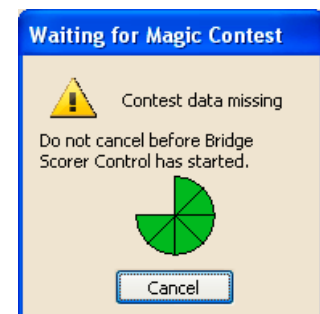
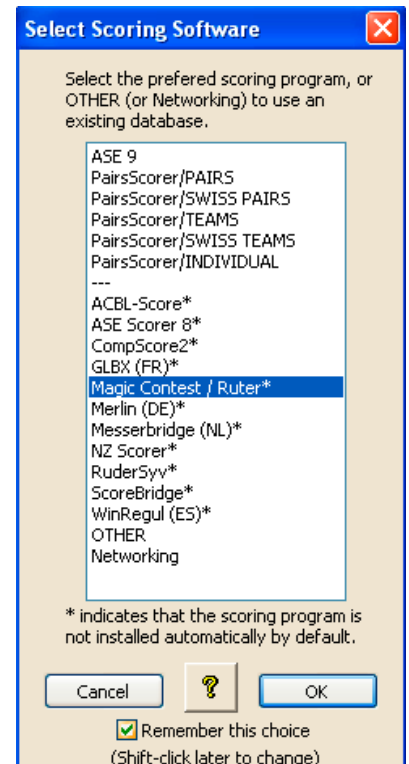


3. Start Magic Contest

When the deals have been chosen (or imported), click START SCORING in BOS. Select "Magic Contest/Ruter" and tick the box "Remember this choice" at the bottom of the dialog to make Magic Contest your default scoring program. A small dialog with "Waiting for Magic Contest" will appear. (Magic Contest takes a while to start)



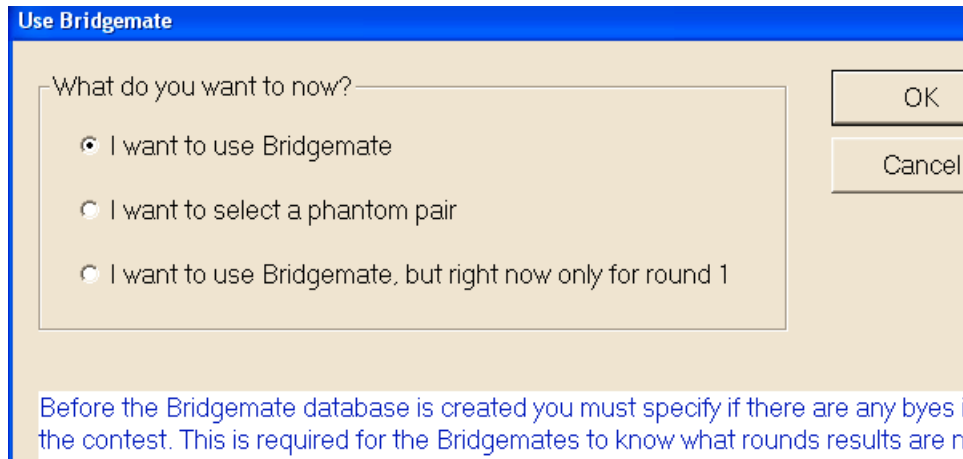
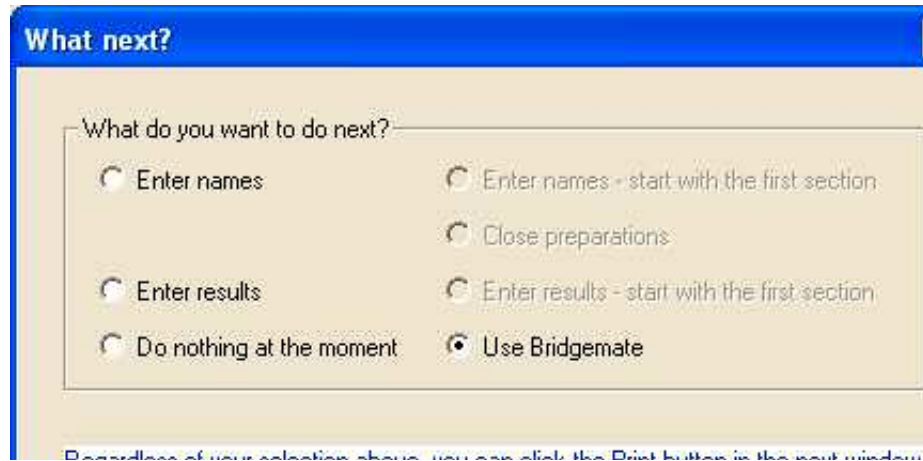
You can double-click the Magic Contest icon on the desktop if Magic Contest would not start automatically.



4. Create game

Choose the same file name in Magic Contest as in BOS. (This will make it easier if you need to return to the game later on)

You can use the same method with BridgeTabs as with (only) Bridgemates. I.e. you should choose “Bridgemate” to start BridgeTabs.



5. GAME SETTINGS

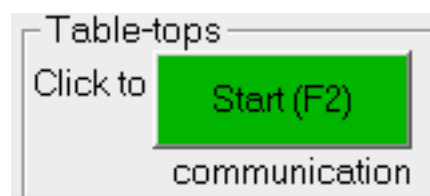
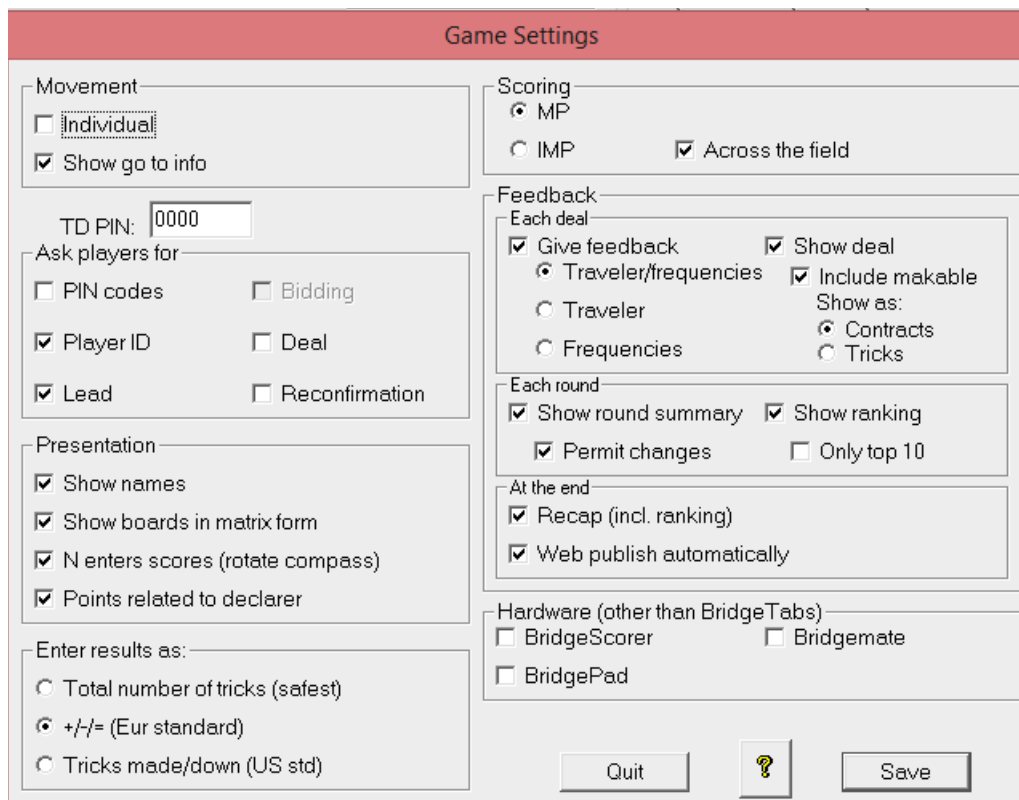
You can start the BridgeTabs with “Save” as soon as the “Game Settings” dialog appears. (Make sure the settings are as you wish first)

The “Bridgemate” box at the bottom right should be checked if you use a mix of BridgeTabs and Bridgemates.

6. START

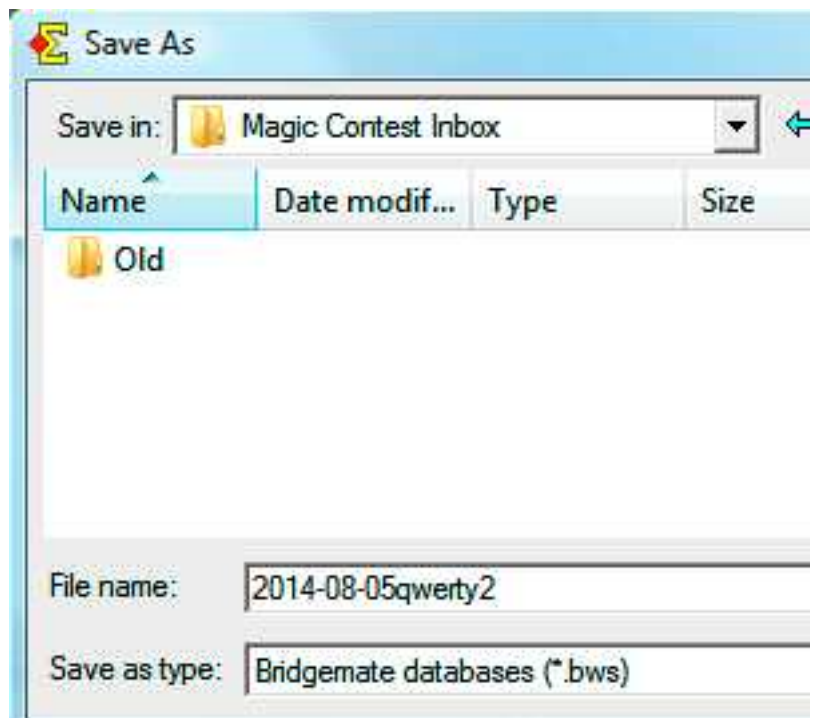
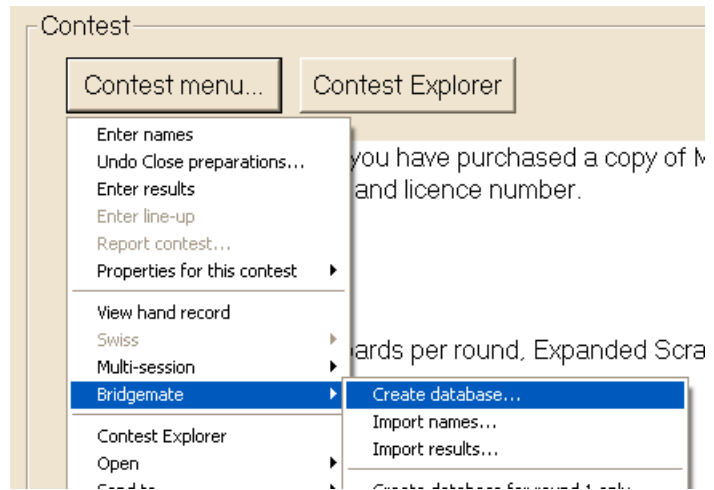
Click the green START button when you are sure the game parameters will not change. This means the BridgeTabs can log on.

If you are the least unsure of the type of game it is definitely better to wait with the start of the BridgeTabs until you are sure. This does not mean that the players must wait. They can note the first few results on paper.



MANUAL START

You can create the database manually via “Game menu” in Magic Contest if you would forget to check “Bridgemate”.



RESTARTS

DON'T close the computer, or any of the programs, before the game is completed!

In case you for some reason must restart, do it the same way as at the first start. i.e. start BOS and choose START SCORING. Note that it is important that you open (choose manually) the correct game in Magic Contest.

