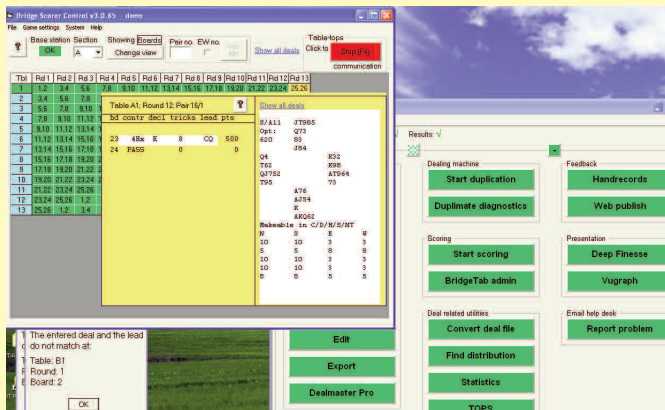


All inclusive package...



...with everything you need

**4**

Dealer: W  
Vuln: All

♠ AKQJ87  
♥ T2  
♦ A42  
♣ 64

♠ 5  
♥ KQ983  
♦ AKQ8  
♣

♠ 4  
♥ AK98  
♦ J65  
♣ T9732

Available tricks

	♠	♥	♦	♣	NT
N	11	11	7	5	6
S	11	11	7	5	6
E	2	2	6	8	6
W	2	2	6	8	6

Opt score: 600  
Contract: NS 5 ♣ NS

HCP  
14 4  
8

Previous 1 2 3 4 5 6 7 8 9 10 11 12 13 14 15 16 17 18 19 20 21 22 23 24 25 26 27 28 Next

Results

Contr.	By	Lead	Tr.	NS ±	NS	Mpts	%
5 ♣	N	11	600		Michael Strebing - B Christoffersen (9)	24	100
4 ♠	W	7	300		David Zack - Robert Gagnon (1)	22	92
3 ♠	W	7	200		Mhairi S Longridge - Ralph Buckley (7)	18	75
3 ♠	W	7	200		Roger Howard - Kurt Moller (4)	18	75

Showing recap for pair:  
9. Michael Strebing - B Christoffersen

Bd	Contr.	By	Lead	Tr.	NS ±	Mpts	%	Opponents
1	4 ♠	N	10	420	18	75		Marlene Powell - Myra A Johns
2	2 ♥	W	8	-110	4	17		Marlene Powell - Myra A Johns
3	4 ♥	E	9	100	18	75		Nita B Dalal - Madeleine Bourge
4	5 ♣	N	11	600	24	100		Nita B Dalal - Madeleine Bourge
5	4 ♥	W	10	-420	15	62		Ginger Chiew - Glenda R Affle
6	4 ♥	W	10	-620	8	33		Ginger Chiew - Glenda R Affle
7	2 ♠	W	8	100	16	67		Emie H Dierick - Cathy Miller

Pay nothing...



...unless you are content



BridgeTab

fits every budget

You choose if you want to use what the players got in their pockets/purses - or buy tablets fitting your taste and budget.



BridgeTab

The ultimate solution

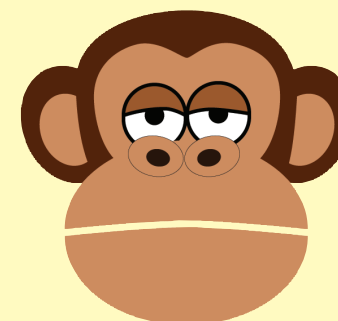
No special hardware



No Internet required

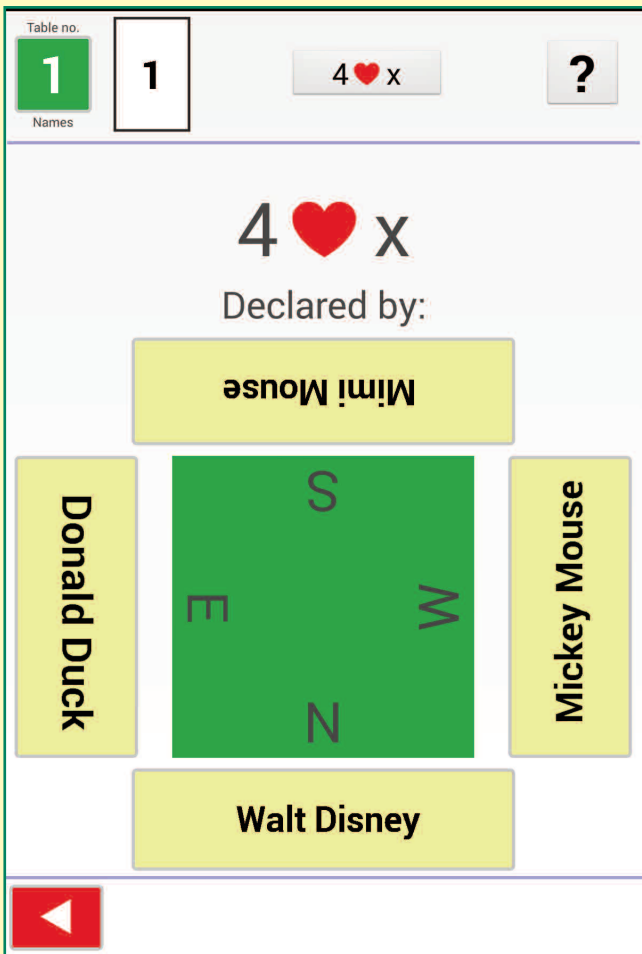


Fool proof





## Intuitive interface



Standard hardware = you get the touch and feel that you are used to.

## Instant feedback

Table no.

1

Names

2

N

4♥

=

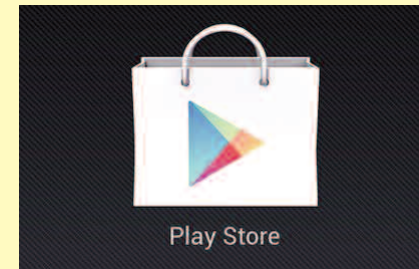
?

Contr.	Ld.	Made	NS+	EW+	NS%
N 4♥	♣ A	=	620		100
E 3♥		+1		170	88
E 3♥		+1		170	88
W 3♥		+2		200	71
E 3♥		+2		200	71
W 4♥		=		420	46
E 4♥		=		420	46
E 4♥		=		420	46
E 4♥		=		420	46
E 4♥		+2		420	12
Rank	Pair	%	Rank	Pair	%
E 4	1	26	63	21	45
E 4	2	7	60	22	44
E 4	3	4	59	23	44
	4	15	56	24	43
	5	25	55	25	42
	6	17	54	26	42

## and easy for the TD

Rd 7(13) #1 - #21		
13	W 4 ♥ -1	100
14	E 3 ♥ =	-140
Rd 8(13) #1 - #20		
15	E 4 ♣ +2	-170
16	N 7 ♠ =	1510
Rd 9(13) #1 - #19		

## Get started now!



Search for “BridgeTab” in Play Store and you will find BridgeTab installed within seconds.

You will also need to download and install the PC software that you find at [www.BridgeTab.com](http://www.BridgeTab.com) to run real games.



is developed by Jannersten Förlag AB of Sweden, the world's oldest (founded in 1939) and largest maker of [bridge] tournament equipment.

You find more information about  
BridgeTabs at

**www.BridgeTab.com**